

Industrial Gateway Server

Enabling reliable connections to your devices for control, data acquisition, and visualization



IGS Basic

IGS Basic includes access to all available IGS Basic protocols and use of up to 80 simultaneous protocols per server.

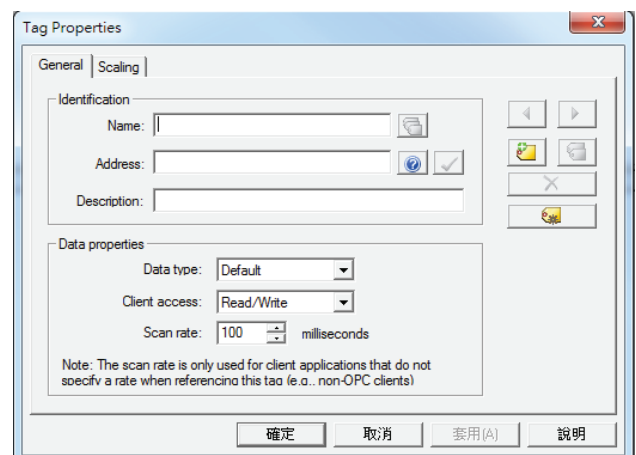
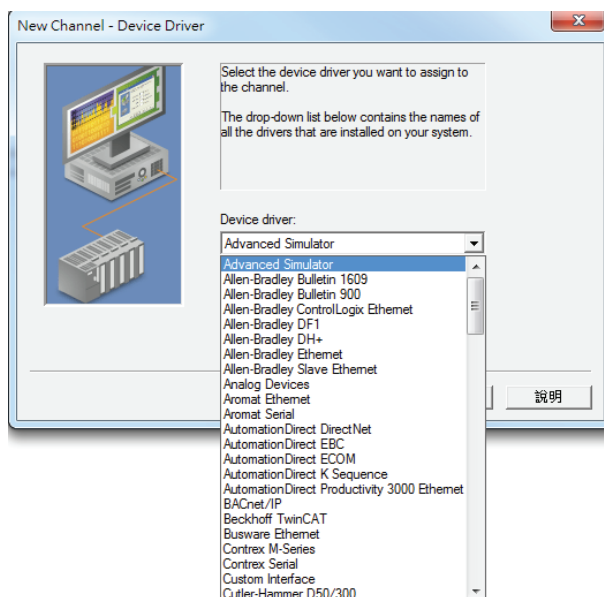
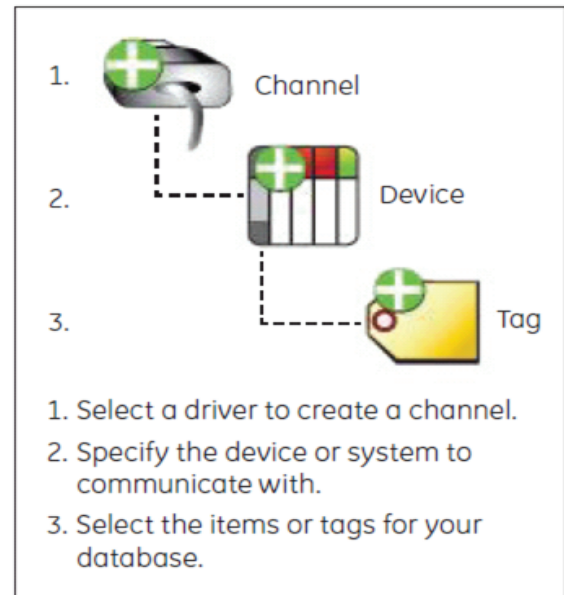
- Advanced Simulator
- Allen-Bradley 1609 UPS
- Allen-Bradley Bulletin 900
- Allen-Bradley CompactLogix
- Allen-Bradley ControlLogix Ethernet
- Allen-Bradley ControlLogix Unsolicited
- Allen-Bradley Data Highway Plus
- Allen-Bradley DF1
- Allen-Bradley Ethernet
- Allen-Bradley Micro800 Ethernet
- Allen-Bradley Micro800 Serial
- Allen-Bradley Unsolicited Ethernet
- Analog Devices
- Aromat Ethernet
- Aromat Serial
- AutomationDirect DirectNET
- AutomationDirect EBC
- AutomationDirect ECOM
- AutomationDirect K Sequence
- AutomationDirect Productivity Series Ethernet
- Beckhoff TwinCAT
- BUSWARE Ethernet
- CODESYS Ethernet
- Contrex M-Series
- Contrex Serial
- Custom Interface
- Cutler-Hammer D50/D300
- Cutler-Hammer ELC Ethernet
- Cutler-Hammer ELC Serial
- Dataforth isoLynx
- DDE Client
- Fanuc Focas Ethernet
- Fanuc Focas HSSB
- Fuji Flex
- GE CCM
- GE EGD
- GE Ethernet
- GE SNP
- GE SNPX
- Hilscher Universal
- Honeywell HC900 Ethernet
- Honeywell UDC Ethernet
- Honeywell UDC Serial
- IDEC Serial
- Intelligent Actuator (IA) Super
- SEL
- InTouch Client
- IOtech PointScan 100
- Krauss Maffei MC4 Ethernet
- Memory Based
- Mettler Toledo
- Micro-DCI
- Mitsubishi CNC Ethernet
- Mitsubishi Ethernet
- Mitsubishi FX
- Mitsubishi FX Net
- Mitsubishi Serial
- Modbus ASCII
- Modbus Ethernet
- Modbus Plus
- Modbus Serial
- Modbus Unsolicited Serial
- MTConnect
- ODBC Client
- Omron FINS Ethernet
- Omron FINS Serial
- Omron Host Link
- Omron NJ Ethernet
- Omron Process Suite
- Omron Toolbus
- OPC DA Client
- OPC UA Client
- OPC XML-DA Client
- Optimization OptiLogic
- Opto 22 Ethernet
- Partlow ASCII
- Philips P8/PC20
- Rockwell Automation - see Allen-Bradley
- SattBus Ethernet
- SattBus Serial
- Scanivalve Ethernet
- Siemens S5
- Siemens S5 3964R
- Siemens S7 MPI
- Siemens S7-200
- Siemens TCP/IP Ethernet
- Siemens TCP/IP Unsolicited
- Ethernet
- Simatic/TI 505 Ethernet
- Simatic/TI 505 Serial
- SIXNET EtherTRAK
- SIXNET UDR
- Square D
- System Monitor
- Telemecanique Uni-Telway
- Thermo Westronics Ethernet
- Thermo Westronics Serial
- TIWAY Host Adapter
- Torque Tool Ethernet
- Toshiba Ethernet
- Toshiba Serial
- Toyopuc PC3/PC2 Ethernet
- Toyopuc Serial
- User Configurable (U-CON)
- WAGO Ethernet
- Yaskawa Memobus Plus
- Yaskawa MP Series Ethernet
- Yaskawa MP Series Serial
- Yokogawa Controller
- Yokogawa CX
- Yokogawa Darwin Ethernet
- Yokogawa Darwin Serial
- Yokogawa DX Ethernet
- Yokogawa DX Serial
- Yokogawa DXP
- Yokogawa HR
- Yokogawa MW
- Yokogawa MX
- Yokogawa YS100

IGS Premium-Optional Drivers

- ABB Totalflow
- Alstom Redundant Ethernet
- BACnet/IP
- Bristol/IP
- Enron Modbus
- Fisher ROC Suite
- Fisher ROC Suite (1-10 devices)
- Fisher ROC Suite (11-50 devices)
- IEC 60870-5-104
- Lufkin Modbus
- OMNI Flow Computer
- SNMP Suite (1-15 devices)
- SNMP Suite (51+)
- SNMP Suite (16-50)
- Triconex Ethernet
- Weatherford 8500
- WITS Suite

Option for Internet of Things (IoT) Gateway

- An optional plug-in that can be added to an IGS Server to connect Operations with IT to support IoT.
- Provides four agents to stream data over the MQTT, HTTP/REST, and the ThingWorx AlwaysOn protocols.
- Offers advanced message formatting for client agents to support multiple data modeling requirements, such as JSON, XML, CSV, and custom models.



MTConnect-OPC UA Driver :

- Continuously collect real-time data from machine tool equipment for analysis and optimization

